

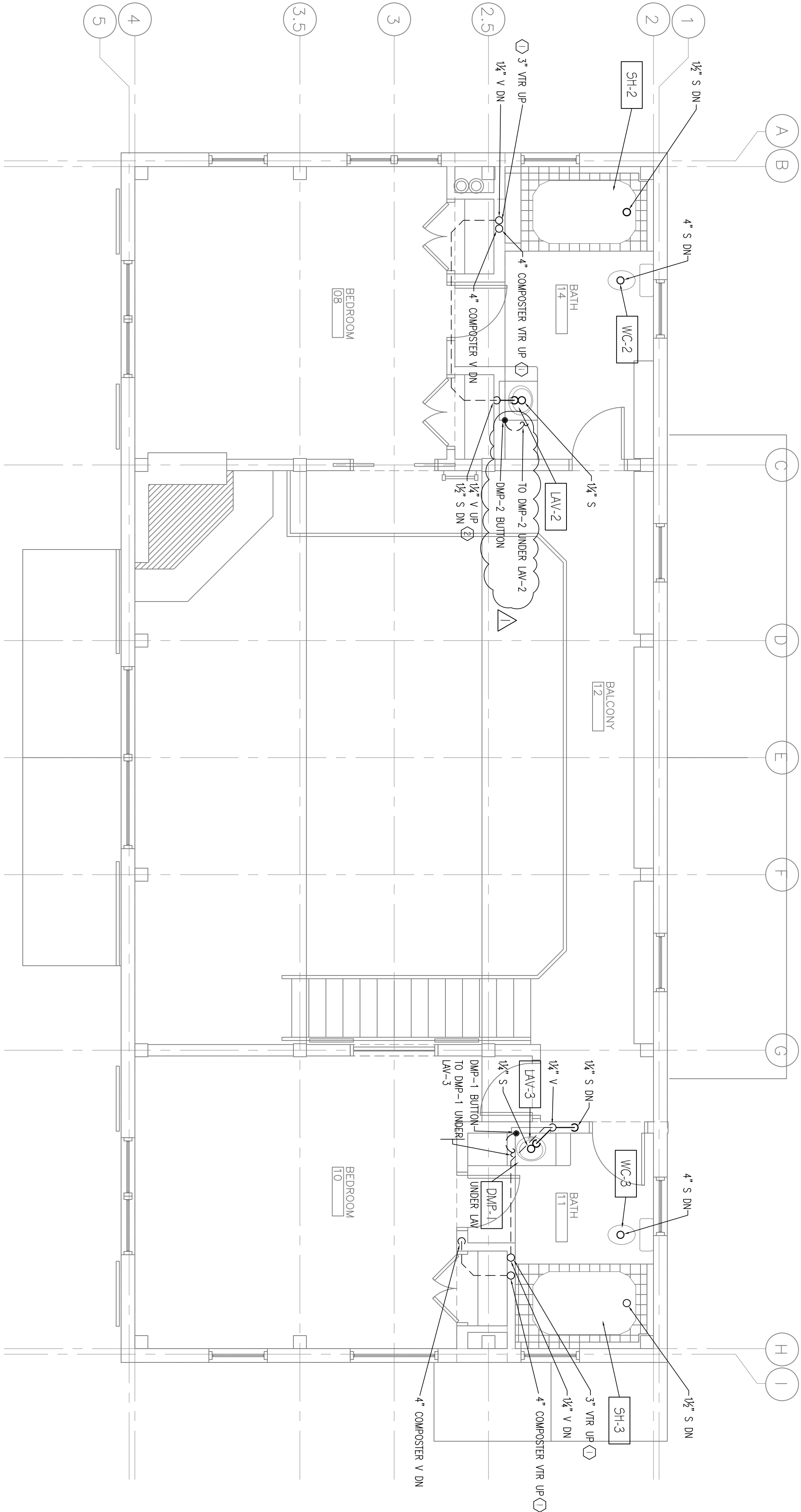
SPECIFIC NOTES

⊖ KENS THROUGH ROOF SHALL NOT BE WITHIN 10' OF ANY OPERABLE WINDOWS.

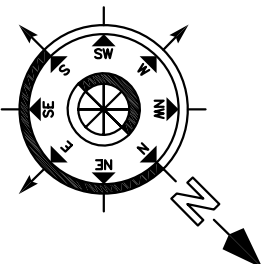
⊗ THE 1/2" S DN SERIES AS A COMBINATION DRAIN AND VENT.

GENERAL NOTES

SEE DRAWING P1.00 FOR INSTRUCTIONS ON PREPARING THE PLUMBING SYSTEM FOR LONG UNOCCUPIED PERIODS.



1 SECOND FLOOR PLUMBING PLAN
TITLE: 1/4\"/>



PROJECT:
GREEN WOODLANDS
BARN/HOUSE PROJECT

ISSUED:
CONSTRUCTION DOCUMENTS

DRAWING TITLE:
SECOND FLOOR
PLUMBING PLAN

PROJECT NO: 570 DATE: 09/28/06
SHEET NUMBER:

P1.02

