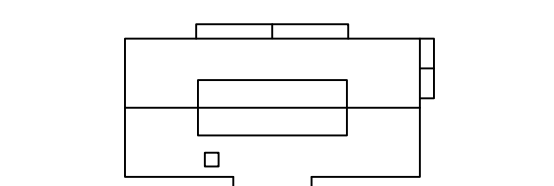


REVISION	DATE	COMMENTS
1	8/31/06	Addendum 1

KEY PLAN:



PROJECT:
GREEN WOODLANDS
HOUSE/BARN PROJECT

ISSUED:
CONSTRUCTION DOCUMENTS

DRAWING TITLE:
DOOR SCHEDULE & TYPES,
DOOR & WINDOW DETAILS

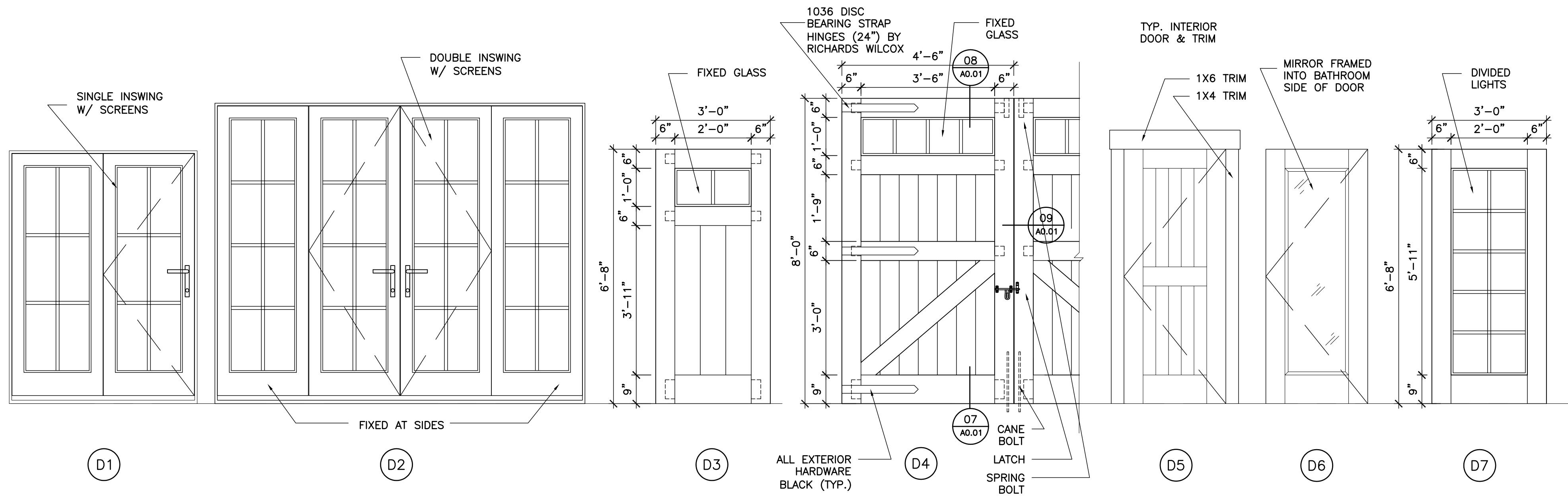
PROJECT NO: 570 DATE: 07/31/06

SHEET NUMBER:

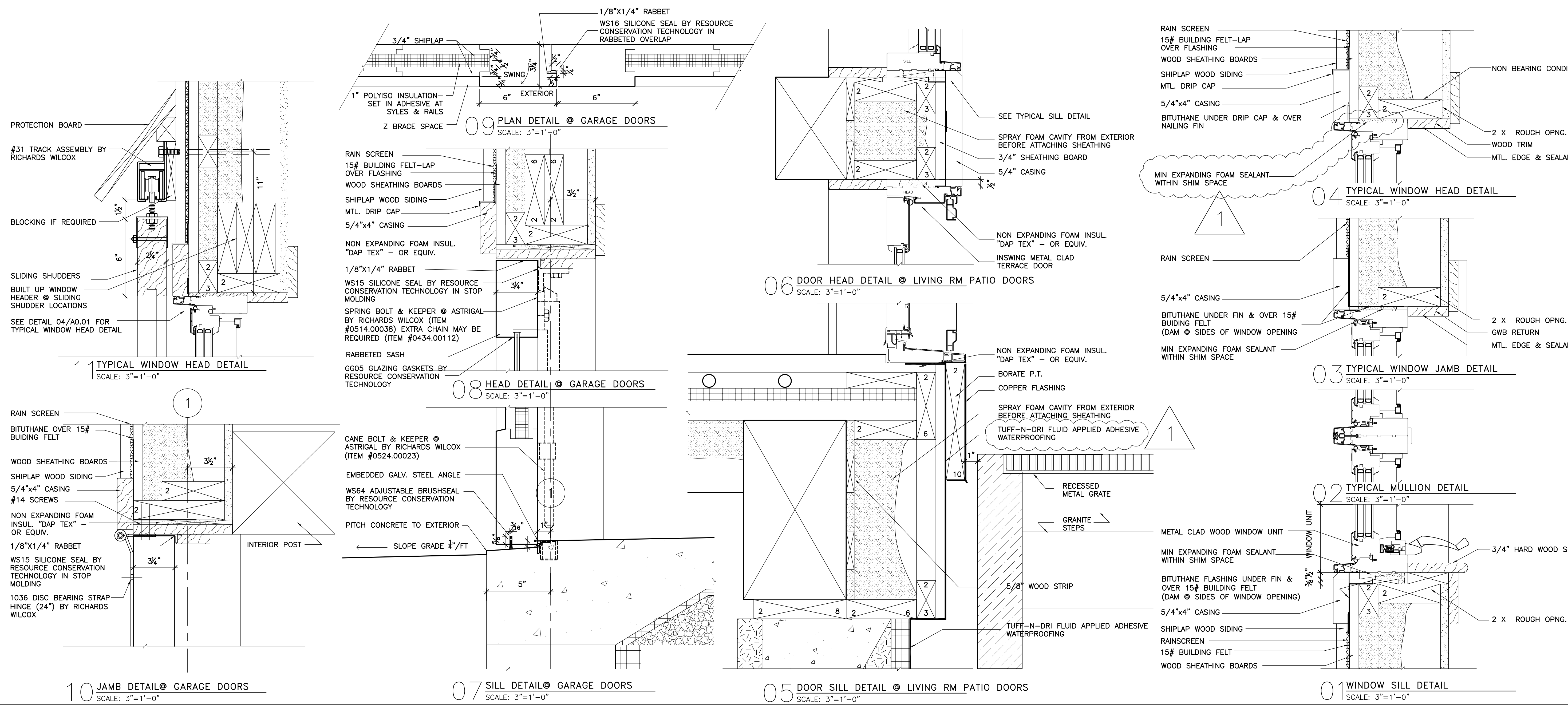
A0.01

KEY:
Alum = Aluminum
WD = Wood

NUMBER	FROM	TO	DOORS			FRAMES					NOTES	
			TYPE	MATERIAL	WIDTH	HEIGHT	THICKNESS	TYPE	MATERIAL	HARDWARE		JAMB
BASEMENT												
01.1	Cellar 01	Exterior	D4	Ins WD	2@4'6"	8'0"						WEATHERSTRIPPING
01.2	Cellar 01	Exterior	D4	Ins WD	2@4'6"	7'0"						WEATHERSTRIPPING
02.1	Cellar 01	Utility 03	D5	Ins WD	3'-0"	7'0"					WD	WEATHERSTRIPPING
03.1	Cellar 01	Utility 03	D5	Ins WD	3'-0"	7'0"						WEATHERSTRIPPING
04.1	Utility 03	Stair 04	D5	WD	3'0"	7'0"						
FIRST FLOOR												
05.1	Mud Room 05	Exterior	D3	Ins WD	3'0"	6'8"						WEATHERSTRIPPING
05.2	Mud Room 05	Living 07	D7	WD	3'0"	6'8"					WD	
05.3	Mud Room 05	Mud Room 05	D5	WD	2'8"	6'8"						
07.1	Living 07	Exterior	D2	Ins WD	9'9"	7'10"						
07.2	Dumbwaiter	Living 07		Ins WD	?	?						
07.3	Living 07	Broom Closet	D5	WD	1'10"	5'6"						
08.1	Living 07	Bedroom 08	D5	WD	2@2'4"	6'8"						BI-PARTING POCKET
08.2	Bedroom 08	Closet	D5	WD	2@1'9"	6'8"						
08.3	Bedroom 08	Closet	D5	WD	2@1'9"	6'8"						
08.4	Bedroom 08	Exterior	D1	Ins WD	4'11"	6'7"						LOEWEN FR. PATIO MODEL# TD2 1520
09.1	Living 07	Master Bath 09	D6	WD	3'0"	6'8"					WD	
09.2	Bedroom 08	Master Bath 09	D5	WD	3'0"	6'8"					WD	
2ND FLOOR												
10.1	Bedroom 10	Bath 11	D5	WD	3'0"	6'8"					WD	
10.2	Bedroom 10	Closet	D5	WD	2@1'9"	6'8"						
11.1	Balcony 12	Bath 11	D6	WD	3'0"	6'8"					WD	
11.2	Bedroom 10	Bath 11	D5	WD	3'0"	6'8"					WD	
13.1	Balcony 12	Bedroom 13	D5	WD	2@2'4"	6'8"						BI-PARTING POCKET
13.2	Bedroom 13	Closet	D5	WD	2@1'9"	6'8"						
13.3	Bedroom 13	Closet	D5	WD	2@1'9"	6'8"						
14.1	Balcony 12	Bath 11	D6	WD	3'0"	6'8"					WD	
14.2	Bedroom 13	Bath 11	D5	WD	3'0"	6'8"					WD	



DOOR TYPES



DETAILS