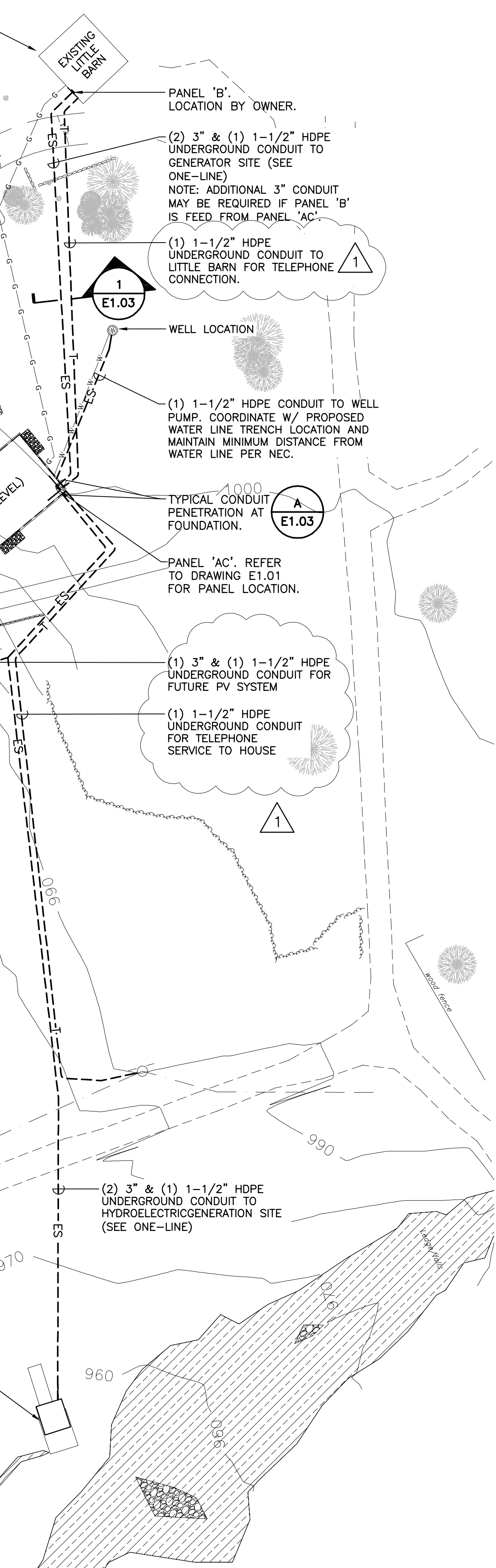
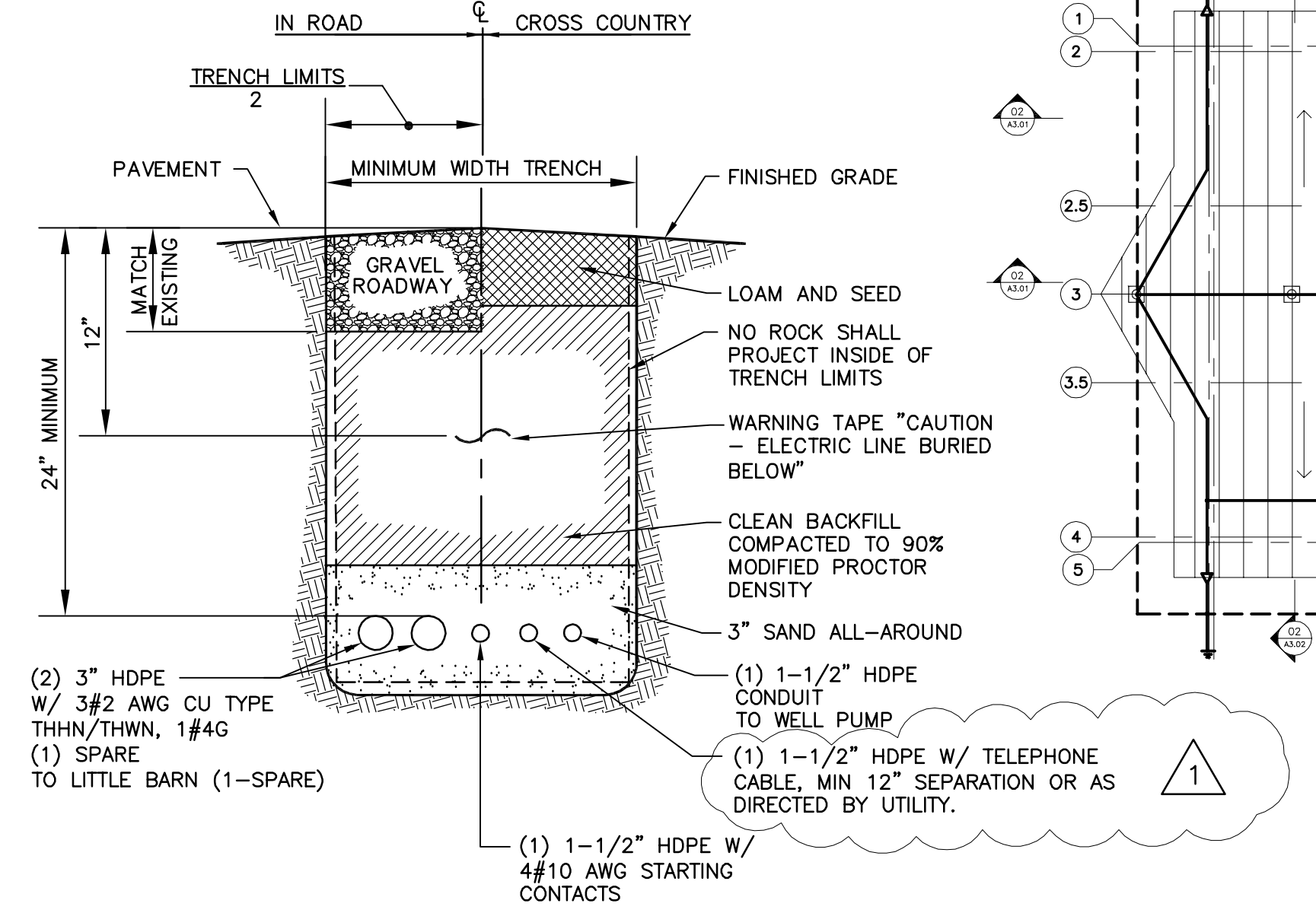


GENERATOR SHALL BE INSTALLED WITHIN THE BARN AS DETERMINED IN THE FIELD. PROVIDE VENTILATED WALL THIMBLE FOR EXHAUST - SIZE AND SUPPORT AS RECOMMENDED BY MANUFACTURER, EXTEND PIPE UP AND AWAY FROM HOUSE (AS DETERMINED IN FIELD). PROVIDE RAIN CAP AND CONTRACTOR TO INSTALL LP GAS LINE AND REGULATOR AS REQUIRED BY THE MANUFACTURER. INSTALLATION INSTRUCTIONS. VERIFY THAT CRITICAL SILENCER HAS BEEN PROVIDED IF NOT THEN PROVIDE SIZED TO MATCH UNIT.

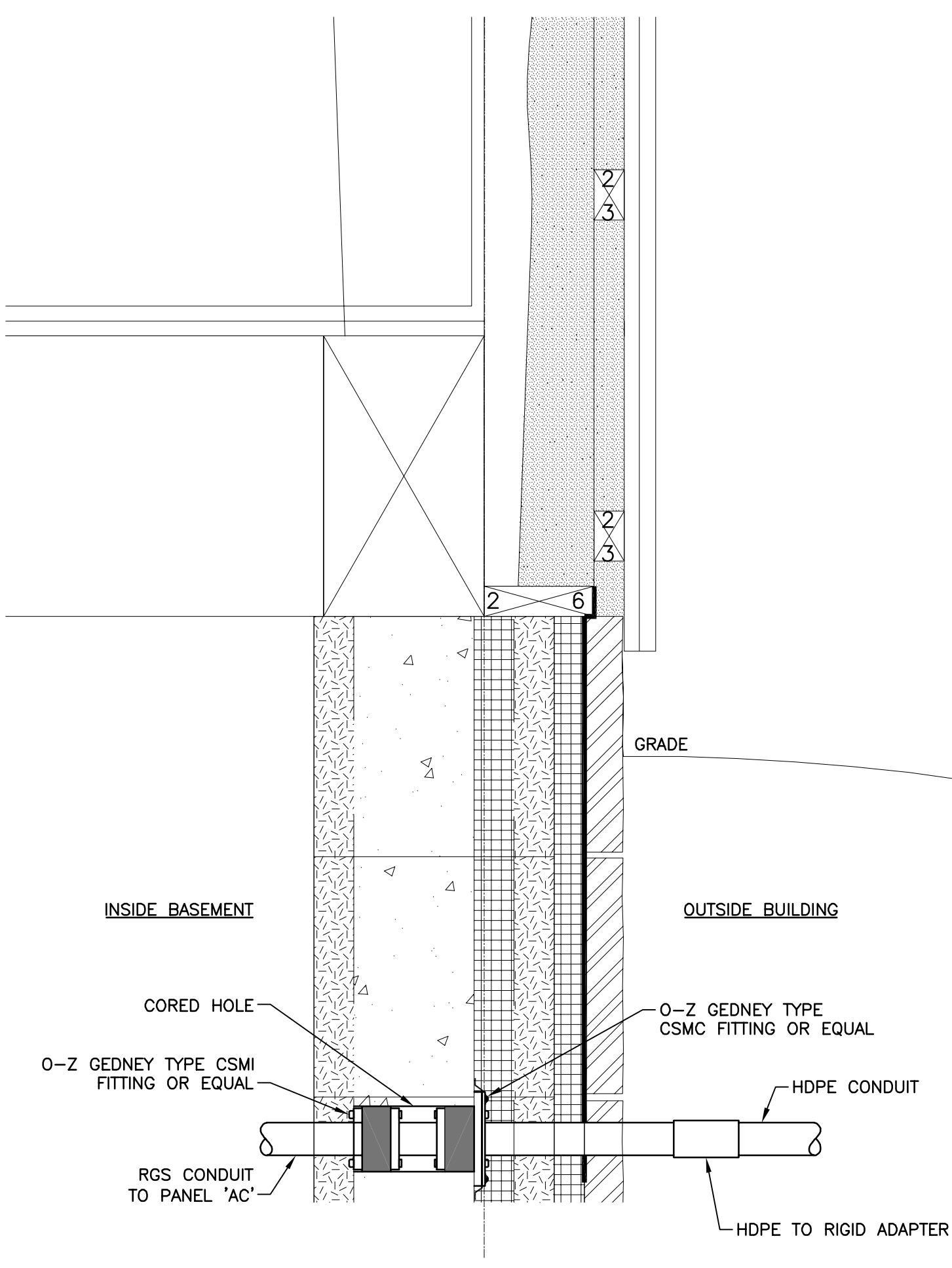


ELECTRICAL SITE PLAN
SCALE: 1" = 30'-0"

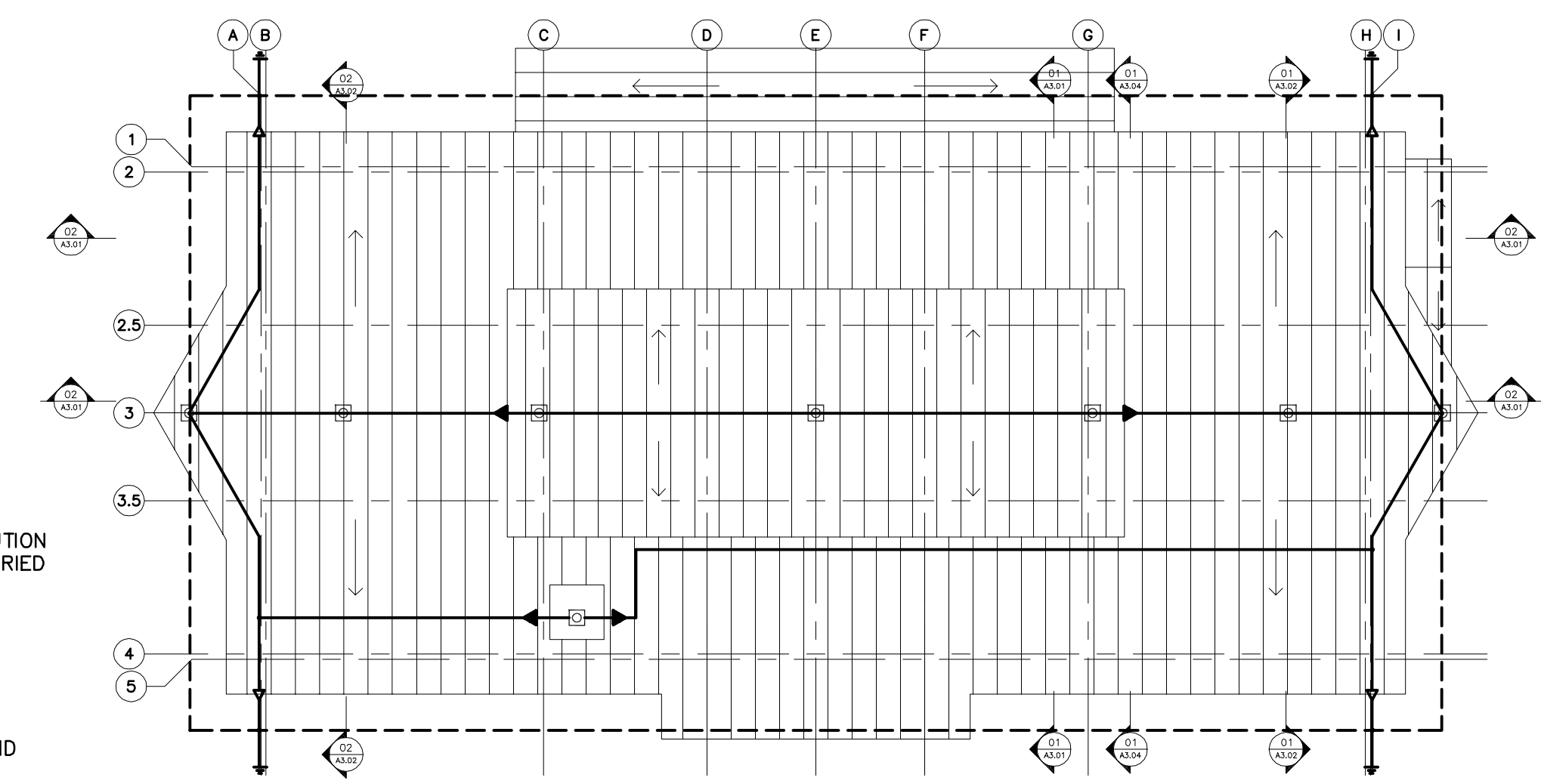


TYPICAL TRENCH SECTION
SCALE: NONE

REFER TO SITE PLAN AND ELECTRICAL SYSTEM ONE-LINE DIAGRAM.



TYPICAL CONDUIT PENETRATION AND CONDUIT ROUTING DETAIL
SCALE: NONE



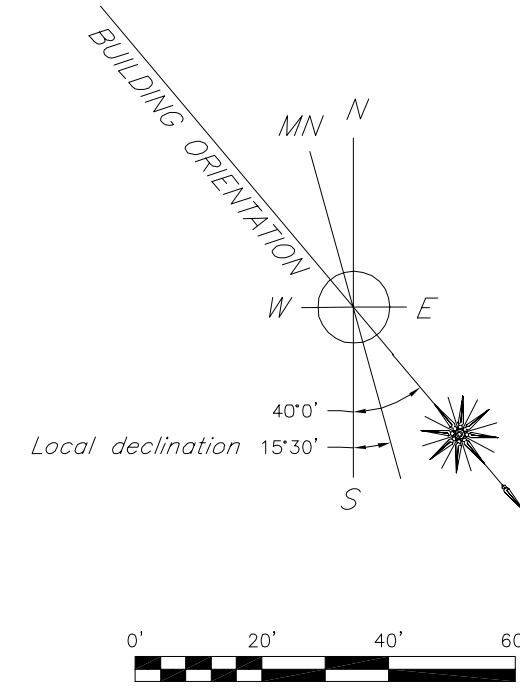
ROOFTOP LIGHTNING PROTECTION PLAN
SCALE: 1/8" = 1'-0"

PARTIAL LIGHTNING PROTECTION/GROUNDING LEGEND:

- BURIED #4/0 BARE COPPER GROUND RING
- ===== #2/0 BARE COPPER CONDUCTOR
- o--- CONNECTION POINT
- ▽ #2/0 BARE COPPER DOWNLEAD TO LOWER ROOF
- ▽ #2/0 BARE COPPER DOWNLEAD TO GROUND GRID
- ⊥ COPPERWELD GROUND ROD 3/4"x10"
- ⊙ AIR TERMINAL

LIGHTNING PROTECTION WORK NOTES:

1. THE LIGHTNING PROTECTION SYSTEM AS SHOWN ON DRAWING HAS BEEN DESIGNED IN ACCORDANCE WITH PROJECT LIGHTNING PROTECTION SYSTEM SPECIFICATION. THE INSTALLATION SHALL COMPLY WITH THE SPECIFICATION.
2. CONDUCTORS SHALL MAINTAIN A HORIZONTAL OR DOWNWARD COURSE, FREE FROM "U" OR "V" (DOWN AND UP) POCKETS.
3. NO BEND OF A CONDUCTOR SHALL FORM AN ANGLE OF LESS THAN 90° NOR SHALL HAVE A RADIUS OF BEND LESS THAN 8 INCHES.
4. AIR TERMINALS SHALL BE PLACED AT 20'-0" MAXIMUM SPACING AROUND THE ROOF PERIMETER OR ALONG ROOF RIDGES AND WITHIN 2'-0" OF OUTSIDE CORNER EDGE.
5. MID ROOF AIR TERMINALS SHALL BE PLACED AT 50'-0" MAXIMUM SPACING.
6. ACTUAL JOBSITE CONDITIONS MAY REQUIRE SLIGHT ALTERATIONS IN AIR TERMINAL, DOWN CONDUCTOR AND GROUND ROD LOCATIONS.
7. BARE COPPER MATERIALS SHALL NOT BE INSTALLED ON ALUMINUM SURFACES AND ALUMINUM MATERIALS SHALL NOT BE INSTALLED ON COPPER SURFACES.
8. ALL LIGHTNING PROTECTION CONDUCTORS SHALL BE FASTENED HORIZONTALLY AND VERTICALLY NOT MORE THAN 3'-0" O.C. MAXIMUM SPACING.
9. METALLIC BODIES OF INDUCTANCE SITUATED WITHIN 6'-0" OF A LIGHTNING CONDUCTOR OR ANOTHER BONDED METAL BODY SHALL BE INTERCONNECTED TO THE LIGHTNING CONDUCTOR SYSTEM, UNLESS INHERENTLY GROUNDING.
10. BOND TO ALL METAL BODIES OF CONDUCTANCE WITHIN 6'-0" OF THE MAIN LIGHTNING CONDUCTOR SUCH AS EXHAUST FANS, ROOF VENTS, METAL COOLING TOWERS, H.V.A.C. UNITS, LADDERS, RAILINGS, ANTENNAS, SKYLIGHT FRAMES, METAL STACKS AND ANY OTHER LARGE METAL BODY WHOSE HEIGHT EXCEEDS THAT OF THE AIR TERMINALS IN USE, UNLESS PROTECTED BY HIGHER ROOF ELEVATIONS.
11. CONNECTIONS TO GROUND ROD SHALL BE MADE AT A POINT NOT LESS THAN 1'-0" BELOW FINISHED GRADE AND 2'-0" AWAY FROM FOUNDATION WALL.
12. BOND TO DOMESTIC WATERLINE.
13. A LIGHTNING ARRESTOR, PROTECTOR OR ANTENNA DISCHARGE UNIT SHALL BE INSTALLED ON EACH ELECTRIC AND TELEPHONE SERVICE AND RADIO AND TELEVISION ANTENNA LEAD-IN BY THE ELECTRICAL CONTRACTOR, OR OTHERS, PER NFPA-70.
14. SURGE TRANSIENT PROTECTION OF SERVICES IS THE RESPONSIBILITY OF THE ELECTRICAL CONTRACTOR OR THE SUPPLIER OF SENSITIVE EQUIPMENT. (I.E. COMPUTERS, COPIERS, TELEPHONE, ETC.)



THE CARRIAGE HOUSE
6 SOUTH PARK STREET
LEBANON, NH 03766
T: 603 448 5778
F: 603 443 9565

P.O. BOX 830
16 STATE STREET
MONTPELIER, VT 05602
T: 802 223 5551
F: 802 223 5552

E: staff@banwell-architects.com

CONSULTANTS:
CONSTRUCTION MANAGER:
BRUSS CONSTRUCTION INC.
PO BOX 456
BRADFORD, NH 03221
T: 603 938 2069 F: 603 938 2621

ENVIRONMENTAL/LEED:
PAUL LEVIELLE
S.P.N.F.
54 PORTSMOUTH ST
CONCORD, NH 03301
T: 603 224 9945 F: 603 228 0423

TIMBERFRAME DESIGN:
PARADIGM BUILDERS
ED LEVIN
5 CROWLEY TERRACE
HANOVER, NH 03755
T: 603 643 2002

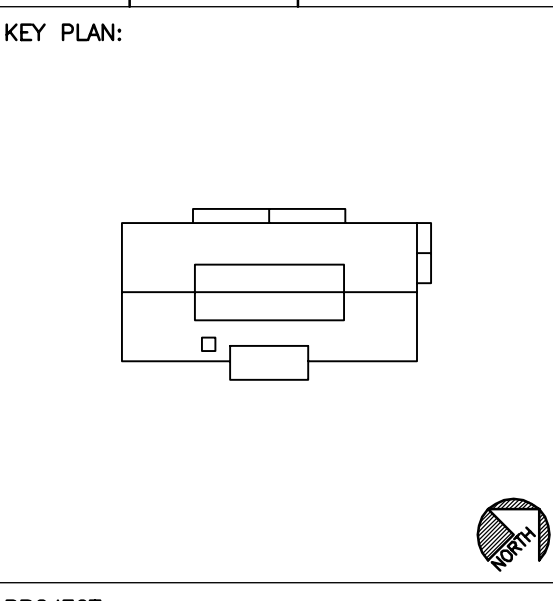
MECHANICAL:
PETERSEN ENGINEERING
PO BOX 4774
PORTSMOUTH, NH 03802
T: 603 436 4233 F: 603 436 4294

ELECTRICAL:
STANTEC
54 ROUTE 106 PO BOX 29
NO. SPRINGFIELD, VT 05150
T: 802 886 2261 F: 802 886 2260

LIGHTING & DAYLIGHTING:
J&M ASSOCIATES
JIM STOCKMAN
P.O. BOX 659A 4 WOODLAWN DRIVE
KENNEBUNKPORT, ME
T: 207 967 5223 F: 207 967 5469

WASTE MANAGEMENT:
CLIVUS NEW ENGLAND
P.O. BOX 127
NORTH ANDOVER, MA 01845
T: 978 794 9400 F: 978 794 9444

REVISION	DATE	COMMENTS
-	-/-/-	-
1	8/29/06	ADDENDUM 1



PROJECT:
GREEN WOODLANDS
BARN/HOUSE PROJECT

ISSUED:
CONSTRUCTION DOCUMENTS

DRAWING TITLE:
ROOF PLAN AND
ELECTRICAL SITE PLAN

PROJECT NO: 570 DATE: 07/31/06
SHEET NUMBER:

K:\2006034 Green Woodlands (Banwell Architects)\Cadd\Electrical\2006034-Roof-E1.03 (Roof Plan and Details).dwg: E1.03, 8/29/2006 4:37:46 PM, MCrowley, Adobe PDF